



Club Calendar

JANUARY IS ROTARY'S VOCATIONAL SERVICE MONTH

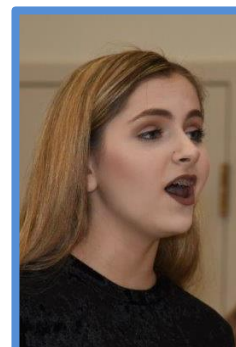
- January 4 No Meeting
HAPPY NEW YEAR

Board Meeting @ 5:45 PM
Griffin Regional College & Career Academy
- January 11 ANNUAL BLOOD DRIVE
8 AM to 1 PM First Baptist

Spalding County Parks & Recreation Update
- January 18 Lt. Gov. Casey Cagle
- January 25 Suresh Ramalingam
Winship Cancer Institute

Rotary Christmas

Erin Mulder, St. George's Episcopal School, coordinated and presented our Annual Christmas Celebration at Griffin Rotary. Rotarians and guests were entertained with such melodies as 'Jesu, Joy of Man's Desiring' and 'Snowfall' by Will Mulder, 'My Favorite Things' and 'It's Beginning to Look a Lot Like Christmas' by Isabella Bankston, 'Rockin Around the Christmas Tree' by Brittain Gill, 'Some Children See Him' by Grace Mulder, 'Let It Snow' by Grace and Steve Mulder, 'Mary, Did You Know?' by Anna Takle on the piano, 'Santa Baby' by Charlotte Daly. And, all joined in to sing 'Rudolph, the Red-Nosed Reindeer'. Steve and Alicia Smith accompanied on the piano.



Our Rotary Family

BIRTHDAYS

- December 30 Chris Edwards
- 30 Eric Worrell
- January 02 Josh Messer
- 05 Kelvin Williams
- 06 Kevin Barlow
- 15 William Wilson
- 15 Brett Bell

ANNIVERSARIES

- December 31 John & Cindy Plageman
- January 06 James & Lisa Jenkins
- 17 Bruce & Susan Bartholomew



ROTARY:
MAKING A
DIFFERENCE

THE GRIFFITARIAN

Annual Blood Drive Set for January 11th



It's time to roll up our sleeves and donate blood in Rotary's Annual Blood Drive set for Thursday, January 11th. Philip Smith will again be coordinating the Drive and is already working on reducing the titer of holiday alcohol in his veins. He will be calling upon Rotarians to donate and to encourage family, co-workers, and friends to donate. The arrangement will be the same as in recent drives. The Drive will be in the Family Life gym at the First Baptist Church. You may choose a time to donate to avoid long waits. Those times are at 15-minute increments

starting at 8:00 AM through 12:45 PM. Please contact Philip or email Wayne Gardner to select your donation time. Please plan to donate (if you are able), and please get family, friends, co-workers, and others to GIVE THE GIFT OF LIFE.

Donate Coats at Next Two Meetings



We will be collecting coats and cold weather garments to donate to the Salvation Army during our next two meetings – January 11th and January 18th. Please bring coats and jackets to the meeting where they will be collected and presented to the Salvation Army for distribution to those in need.

Thank You Bell Ringers!

Our club project of ringing the bell at the Salvation Army Kettle each year probably demands more people and hours than most if not all projects we undertake. This year, we rang 306 hours at our Kettle at Kroger's. Thanks to the 65 Rotarians who rang this season. And, thanks to our Bell Ringing Partners who helped us: First National Bank (20), Sprayberry & Company (16), Beck, Owen & Murray (10), Memorial Drive Vet Clinic (10), CareMaster (10), Newton Crouch, Inc. (10), Flint River Regional Library (10), Daybreak Rotary (12.5), Griffin OB-GYN (9), Snider-Killingsworth Insurance (6), Paragon Consulting (7), United Bank (7.5), Murray Company (8), SCTC Rotaract (8), The Cancer Warriors (6), GHS JrROTC (3), GRCCA Students (3), Flint River Council, BSA (2), Liberty Technology (2), Griffin Waypoint (2).

Have A Safe & Happy New Year

MEETING MAKEUP INFORMATION

Monday – 12 Noon	Henry County	PJs Sidewalk Café, McDonough
Monday – 12:15 PM	Fayetteville	IHOP, Fayetteville
Monday – 6:30 PM	Coweta-Fayette	Senoia Coffee Company, Senoia
Tuesday – 12 Noon	Barnesville	Lamar Co. College & Career Academy
Tuesday – 12 Noon	Jackson/Butts Co.	Daughtry Park, Jackson
Tuesday – 12:15 PM	Thomaston/Upson Co	Thomaston-Upson Senior Center
Wednesday – 7:30 AM	Griffin Daybreak	J. Henry's Restaurant, Griffin
Wednesday – 12:15 PM	Clayton County	Holiday Inn, Jonesboro
Thursday – 7:15 AM	Fayette Daybreak	Windham ,Peachtree City
Friday – 12 Noon	Newnan	Newnan Country Club, Newnan

Rotary eClub One– One Makeup per Quarter

ROTARY CLUB OF GRIFFIN, GA
PO Box 473, Griffin, GA 30224
Club Number 4129

OFFICERS

President	- Tom Gardner
Vice-President	- Janice Wallace
President-Elect	- Randy Peters
Treasurer	- Art Hammond
Secretary	- Yvonne Langford
Sergeant-at-Arms	- George Granade
Club Chaplain	- Wade Miller
Bulletin Editor	- Wayne Gardner
Photographer	- William Wilson

DIRECTORS

Membership	- Charles Woodroof
Public Relations	- Brett Bell
Club Administration	- John White
Rotary Foundation	- Alan Dodson
Vocational Service	- Corey Letson
Community Service	- David Galloway
International Service	- Bill Hardee
New Generations	- Katy Arrowood

DISTRICT 6900 AND ROTARY INTERNATIONAL

ED OUTLAW

Assistant District Governor

ALEC SMYTHE

District 6900 Governor

IAN H.S. RISELEY

Rotary International President

JOIN GRIFFIN ROTARY ONLINE

griffinrotary.org

FOLLOW

ROTARY CLUB OF GRIFFIN



THE ROTARY FOUNDATION



YEARS OF DOING GOOD IN THE WORLD

GRIFFIN ROTARY: MAKING A DIFFERENCE